

***ELECTRICAL POWER  
SYSTEM OF  
BULGARIA***



ESO EAD, NDC

July 2019  
Sofia

# ELECTRICITY SYSTEM OPERATOR EAD

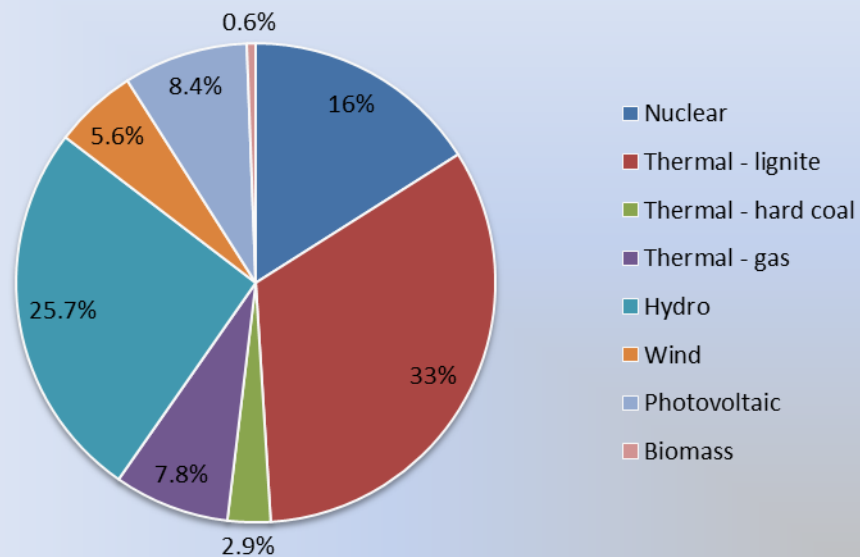
## TRANSMISSION NETWORK



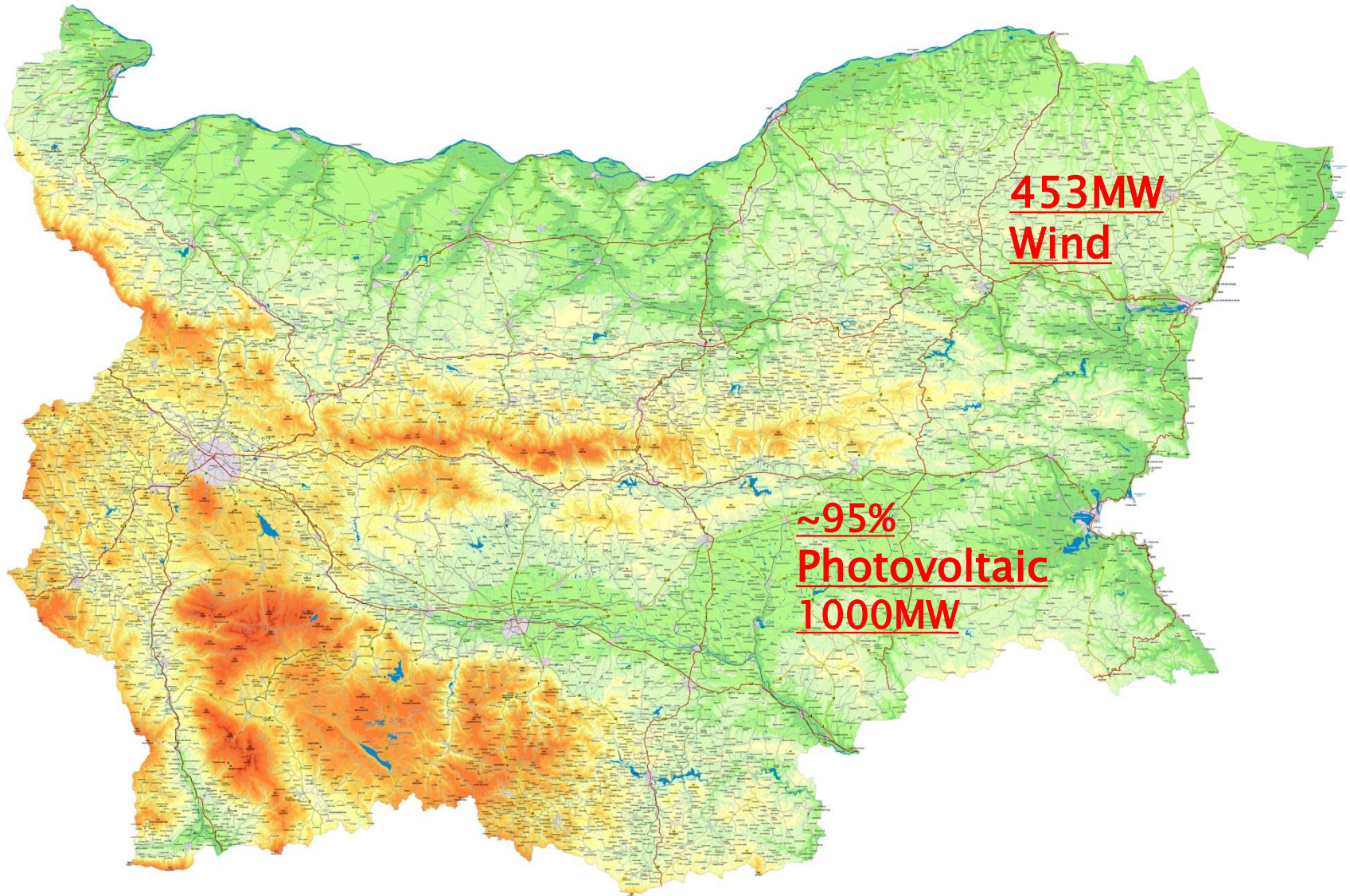
## INSTALLED GENERATION CAPACITIES 2018

Generation type	MW	Variation 2018/2017, %	Share, %
Nuclear	2000	0	16
Thermal - lignite	4119	0	33
Thermal - hard coal	362	0	2.9
Thermal - gas	983	42.7	7.8
Hydro	3208	0.1	25.7
Wind	700	0	5.6
Photovoltaic	1052	0.3	8.4
Biomass	77	0	0.6
<b>Total</b>	<b>12501</b>	<b>3.42</b>	<b>100</b>

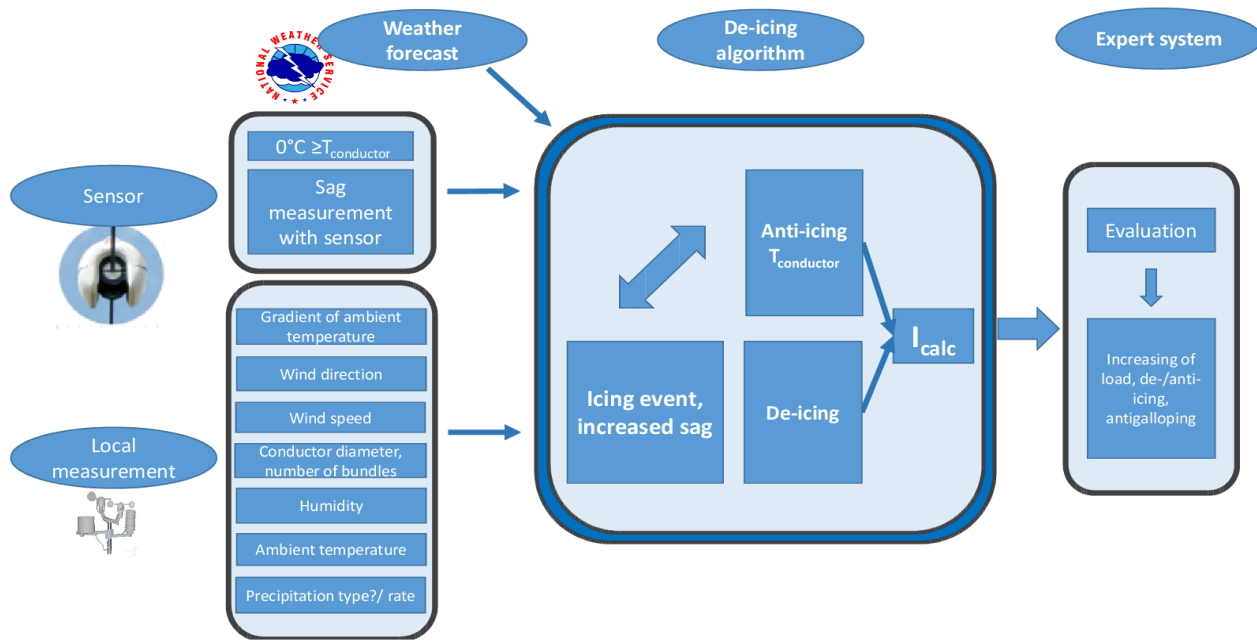
### Installed capacity shares by plant type



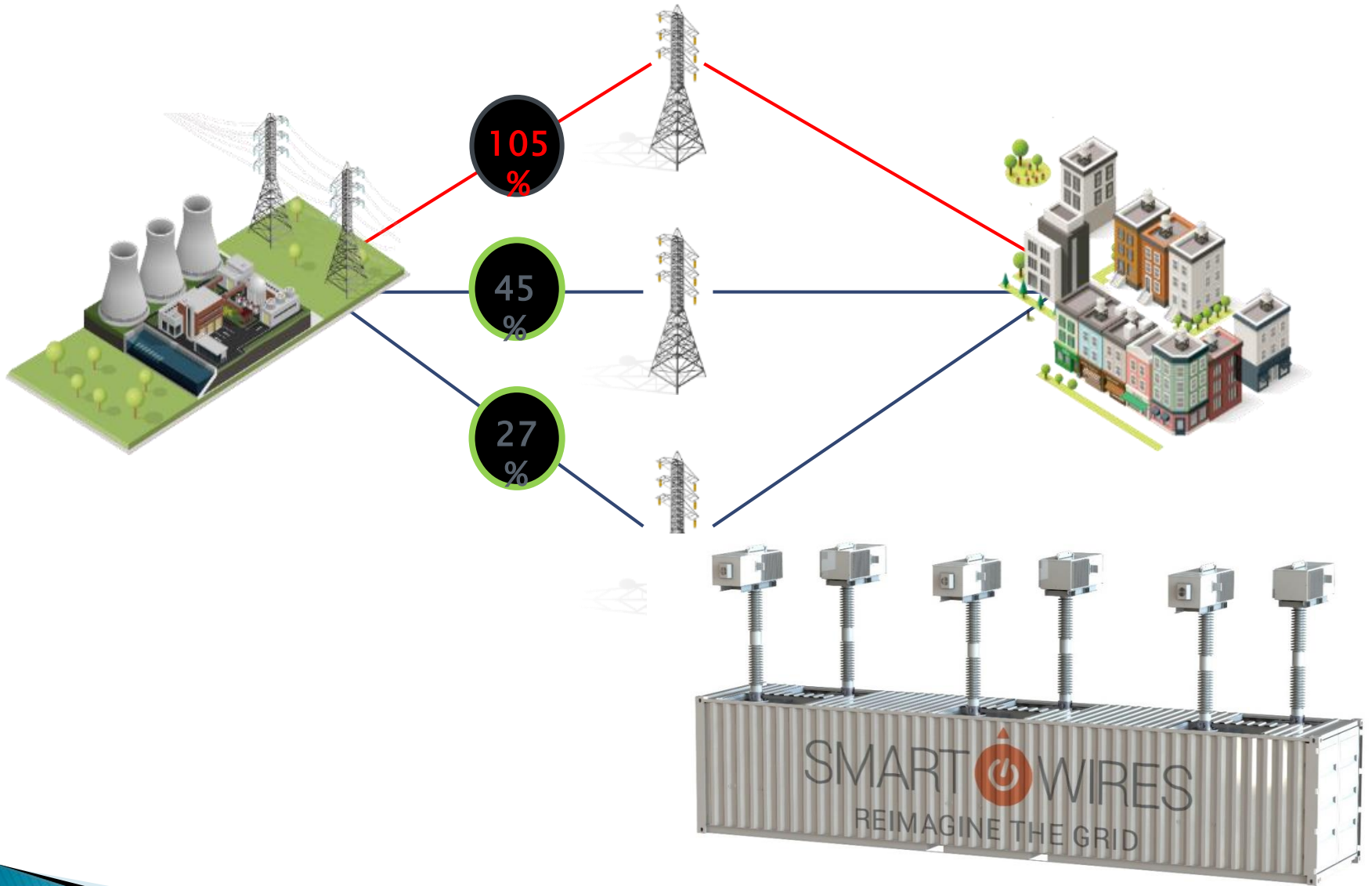
# ELECTRICITY SYSTEM OPERATOR EAD



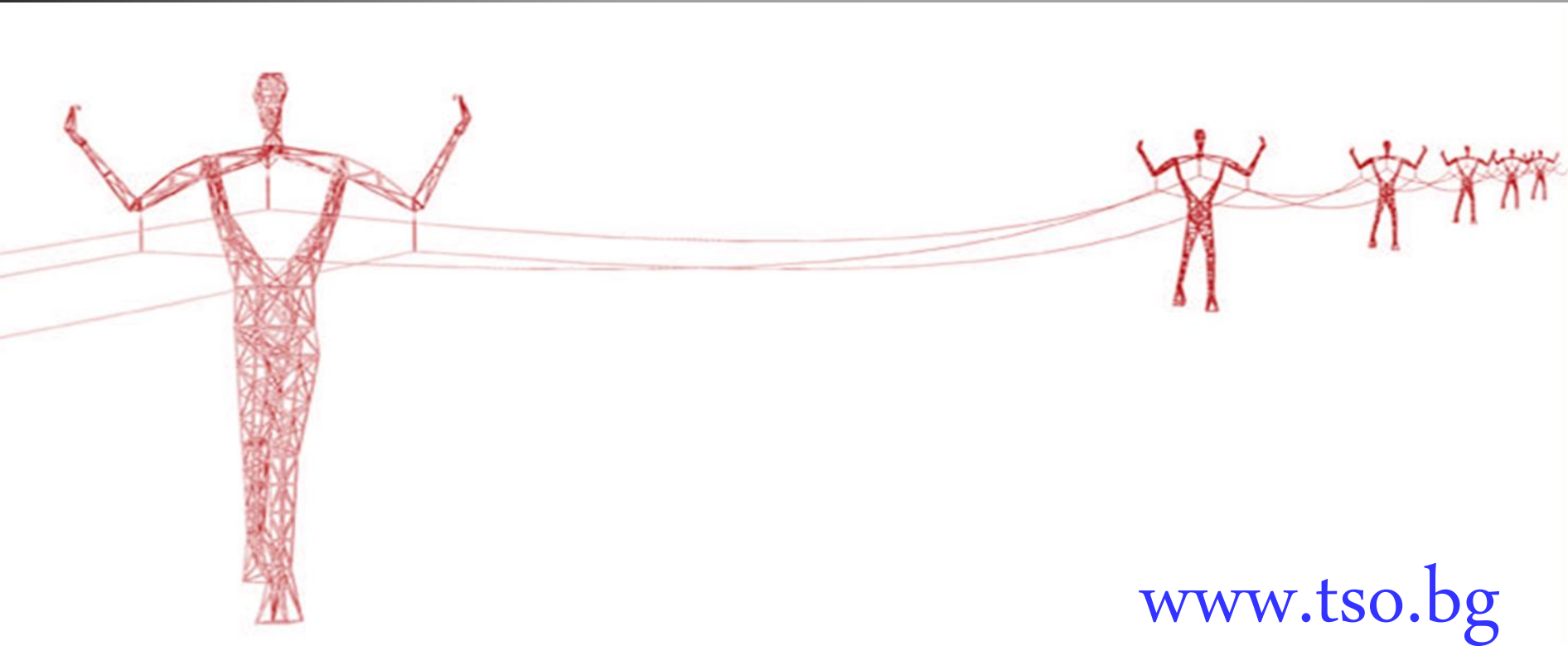
# ELECTRICITY SYSTEM OPERATOR EAD



# ELECTRICITY SYSTEM OPERATOR EAD



THANK YOU FOR YOUR  
ATTENTION!



[www.tso.bg](http://www.tso.bg)